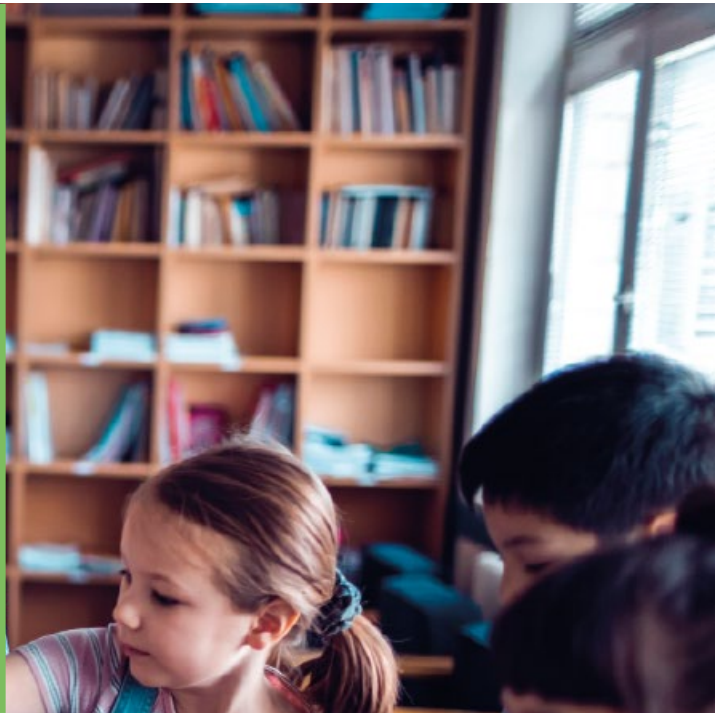


Investing for Impact

A guide to positive impact through listed equities



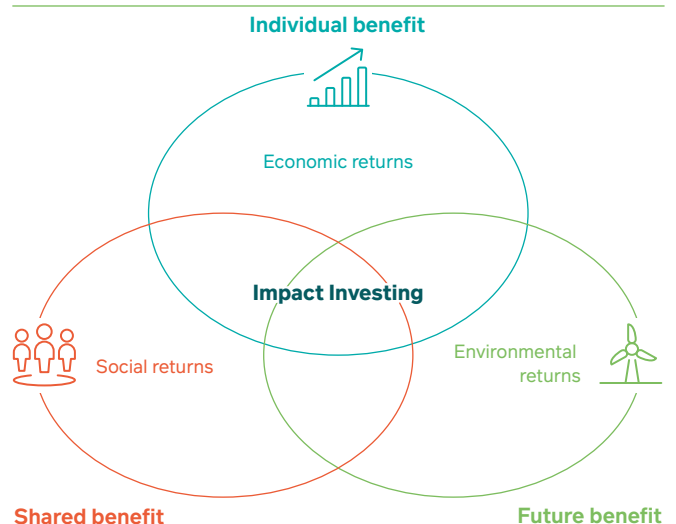
What is impact investing?



Listed equity impact investment has the purpose of investing in companies aiming to achieve measurable positive societal impact through addressing the world's major social and environmental challenges, while at the same time producing a financial return. These investments can be made in both emerging and developed markets and target a wide range of impact areas.

The growing impact investment market provides capital to address the world's most pressing challenges in sectors such as sustainable agriculture, renewable energy, conservation and microfinance, as well as affordable and accessible basic services including housing, healthcare, and education. These impact investment areas are increasingly being mapped to the United Nations Sustainable Development Goals (SDGs), which provide a framework against which impact can be assessed and measured.

Figure 1 Aiming for societal and economic return



The value from the fund's assets will go down as well as up. This will cause the value of your investment to fall as well as rise and you may get back less than you originally invested.

UCITS HAVE NO GUARANTEED RETURN AND PAST PERFORMANCE IS NOT A GUIDE TO FUTURE PERFORMANCE

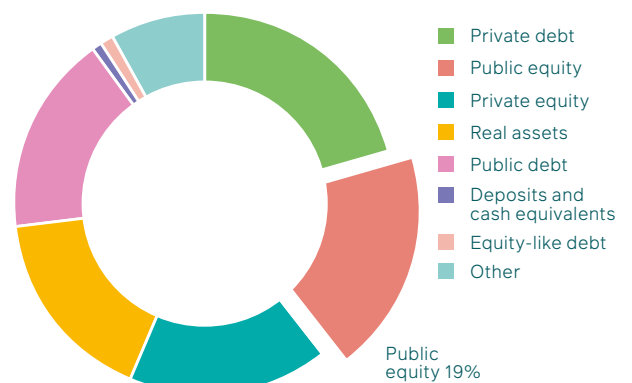
The democratisation of impact investing

Historically, impact investing consisted primarily of private finance to fund specific, impactful projects. Because of this, it has chiefly sat within the sphere of institutional or high net worth investors, with little access for the general public. But that is not to say the demand isn't there. While traditionally impact investment has largely been the reserve of private equity and debt, the impact universe has now extended to include listed equity funds, allowing much greater access for wider categories of investors. Liquid, open-ended investment vehicles can effectively allow for the 'democratisation of impact investing', giving ordinary people a stake in the game.

This is a relatively new development, and listed equity impact investment currently represents a small, but growing, percentage of the overall impact investment universe. This is only set to grow, as investors increasingly expect a societal, as well as an economic, return on their investments.



Figure 2 Historically the remit of private equity and debt



Source: GIIN, Annual Investor Survey, 2020, excluding outliers, total AUMs USD 221bn.



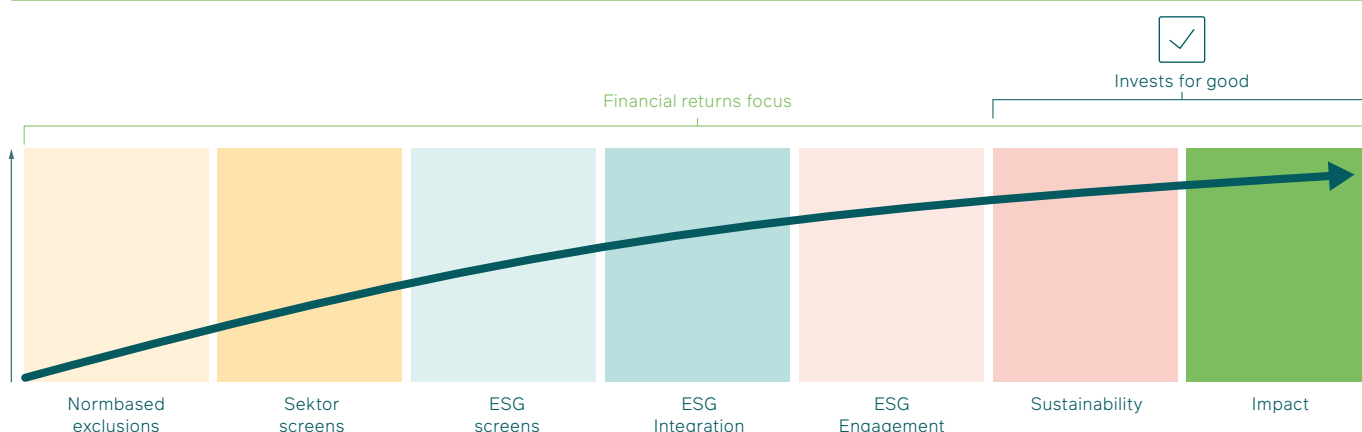
Is impact investing the same as ethical or ESG investing?

Impact investing is fundamentally different from traditional ethical investing or environmental, social and governance (ESG) investing – even if the difference may seem subtle on the surface.

Ethical investing has been with us for decades, and some would say longer. It had its origins in the Quaker movement and was originally a matter of negative screening, put in place to match the values of individuals or the public institutions and foundations representing them. 'Ethical' funds tended to exclude sectors like tobacco, alcohol, weapons, gambling, pornography, and these days also tend to avoid sectors such as thermal coal, nuclear power or even fossil fuels in general. ESG investing takes a broader approach and incorporates environmental, social and governance considerations alongside – or within – financial analysis. It looks to integrate such issues as shareholder rights, stakeholder considerations and reputational risk into the investment framework. Often, these strategies still have some basic exclusions, but the focus is on identifying the 'extra-financial' risks and opportunities a company is facing within the more traditional financial analysis.

Impact funds in the listed equities space, meanwhile, need to invest in companies that have the explicit intention of addressing a range of societal and environmental issues the world is facing, again, increasingly framed by the SDGs. Along those lines, there are several areas that Impact investors have to consider, beyond the financial investment case for a business.

Figure 3 A spectrum of responsible investment



Source: M&G, May 2021.

Impact considerations

Intentionality

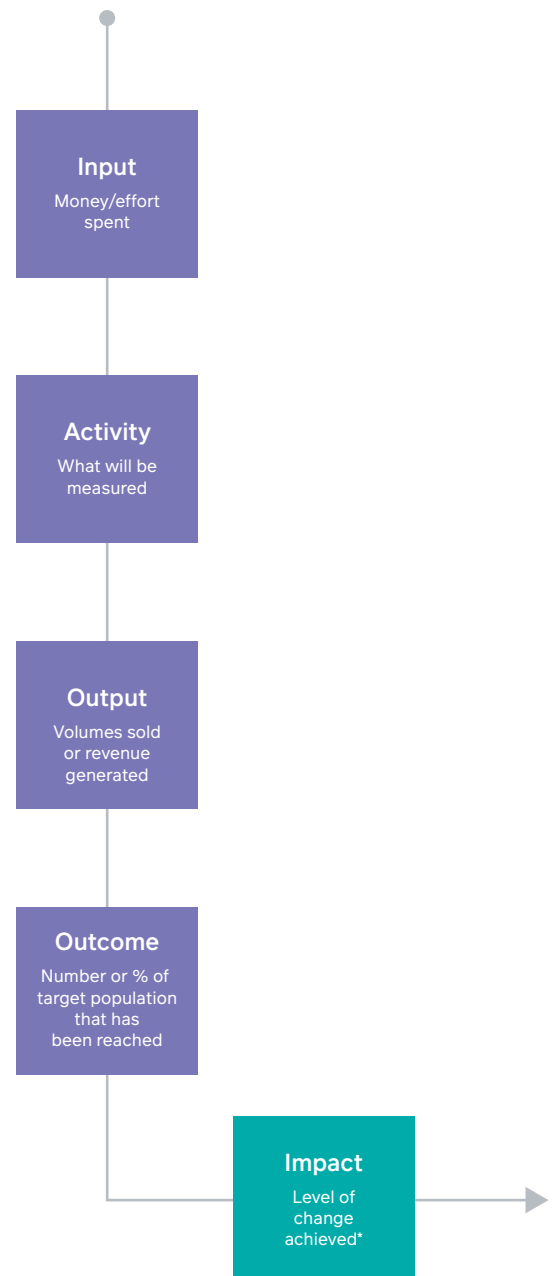
One element that investors need to consider is the idea of 'intentionality'. This is when a company specifically sets out to deliver a particular impact, with that goal being part of the company's mission statement, strategy and actual day-to-day operations (inadvertent impact doesn't count). There is also intentionality from the investor's viewpoint; that is, the intention to generate positive social or environmental impact through an investment. To achieve this, investors must actively pick stocks because of their positive impact, rather than screening out companies or picking the least bad from each sector.

Additionality

In traditional impact investing, the 'additionality' of the investment is also considered — identifying and reporting the resultant impact of every pound, euro or dollar invested in a project. For example, a specific amount invested allowed a company to build social housing for 10,000 people, which otherwise would not have been built. This is the additionality of the investment.

As listed equity impact funds are generally dealing in secondary markets, and the directing of that funding is often not possible, additionality is considered in other ways, generally focused on understanding the additionality of the company. To do that, we might ask how the world would be different if that particular company did not exist or if it were not adequately funded, or how replicable its products or services are.

Figure 4 The results chain: company specific impact measurement



* Number of people successfully treated or cured, etc.
Source: M&G, May 2021.

Measurability

Another key differentiator between impact and other forms of responsible investment is 'measurability'. This is one of the central tenets of impact investing, and also one of its most challenging aspects, especially so for investors in public equity markets where measurement can be less clear. Quality of data and measurability of intangibles are key challenges here, but they need to be overcome for public market impact investors to be effective.

One method to help measure impact at a company level involves feeding analysis into a 'results chain' (figure 4). This framework is used by organisations including the World Health Organisation and the Gates Foundation, allowing the route to impact, and the results achieved, to be mapped from A to Z. This achieved impact can also be mapped against the SDGs, to gain greater insight into its materiality.

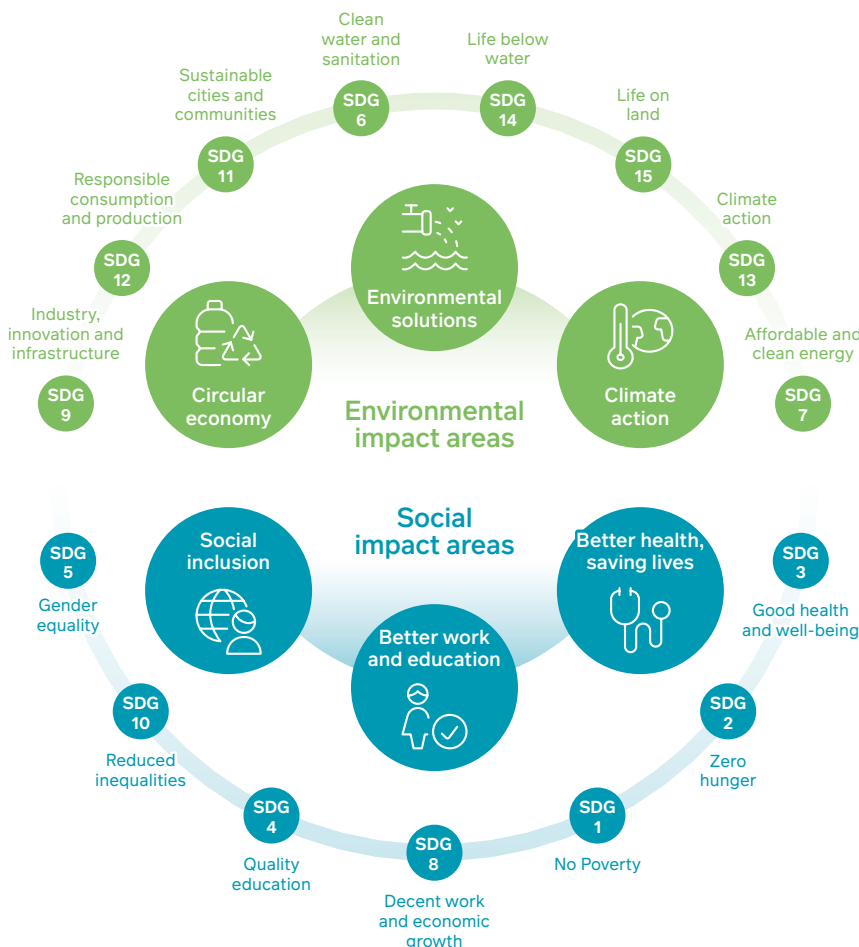
Sustainable Development Goals

The United Nations Sustainable Development Goals (SDGs) are a universal call to action to end poverty, protect the planet and ensure that all people enjoy peace and prosperity – its timeframe runs to 2030.

The 17 Goals (with 169 key performance indicators, or sub-goals) build on the Millennium Development Goals, while including new areas such as climate change, economic inequality, innovation and sustainable consumption among other priorities. The goals are interconnected – often, the key to success on one will involve tackling issues more commonly associated with another.

The SDGs also provide a framework for delivering sustainable outcomes, and are increasingly being adopted by both investors and companies as a means of framing their sustainable, or Impact, activities. It is also possible to create specific impact targets focused on key investible impact areas, which can also be mapped against the SDGs. This provides a robust investment and measurement framework, and help impact investors to stay focused on the most pressing issues facing society and the planet we live on.

Figure 5 Mapping investments against the SDGs



The diagram above references the UN SDGs – 'Sustainable Development Goals'. We have mapped the SDGs against M&G's Impact Areas. While we support the UN SDGs, please note that we are not associated with the UN and our funds are not endorsed by the organisation.



Introducing the M&G (Lux) Positive Impact Fund

Seeking positive impact and sustainable wealth

The M&G (Lux) Positive Impact Fund seeks to deliver attractive returns through investments in impactful and sustainable companies.

The fund has two aims:

- To provide a higher total return (the combination of capital growth and income) than that of the global equity market over any five-year period; and
- To invest in companies that have a positive societal impact through addressing the world's major social and/or environmental challenges.

A compelling dual proposition, aiming to invest in companies that address the world's major social and environmental challenges, while generating competitive economic returns.

A transparent vehicle based on a solid investment process, providing widespread access to impact investment through listed equities.

A strategy that can benefit from flows of capital across sectors and industries to help achieve the UN Sustainable Development Goals (SDGs) – a universal call to action to end poverty, protect the planet and ensure that all people enjoy peace and prosperity.

The value and income from the fund's assets will go down as well as up. This will cause the value of your investment to fall as well as rise. There is no guarantee that the fund will achieve its objective and you may get back less than you originally invested.

The fund holds a small number of investments, and therefore a fall in the value of a single investment may have a greater impact than if it held a larger number of investments.

The fund can be exposed to different currencies. Movements in currency exchange rates may adversely affect the value of your investment.

The fund invests mainly in company shares and is therefore likely to experience larger price fluctuations than funds that invest in bonds and/or cash.

Fund info	
Fund Manager	John William Olsen
Launch date	29 November 2018
Fund size (as at 30.04.21)	€361 million
ISIN (Euro A Acc.)	LU1854107221
ISIN (Euro A Dist.)	LU1854107148



ESG information from third-party data providers may be incomplete, inaccurate or unavailable. There is a risk that the investment manager may incorrectly assess a security or issuer, resulting in the incorrect inclusion or exclusion of a security in the portfolio of the fund.

The views expressed in this document should not be taken as a recommendation, advice or forecast.

Further details of the risks that apply to the fund can be found in the fund's Prospectus.

To be always updated

LinkedIn



Follow our **M&G Investments** page for updates at a click!



UCITS HAVE NO GUARANTEED RETURN AND PAST PERFORMANCE IS NOT A GUIDE TO FUTURE PERFORMANCE.

For Investment Professionals and Institutional Investors only. Not for onward distribution. No other persons should rely on any information contained within. Distribution of this document in or from Switzerland is not permissible with the exception of the distribution to Qualified Investors according to the Swiss Collective Investment Schemes Act, the Swiss Collective Investment Schemes Ordinance and the respective Circular issued by the Swiss supervisory authority ("Qualified Investors"). Supplied for the use by the initial recipient (provided it is a Qualified Investor) only. In Spain the M&G Investment Funds are registered for public distribution under Art. 15 of Act 35/2003 on Collective Investment Schemes as follows: M&G (Lux) Investment Funds 1 reg. no 1551. The collective investment schemes referred to in this document (the "Schemes") are open-ended investment companies with variable capital, incorporated in England and Wales in respect of M&G Investment Funds and in Luxembourg in respect of M&G (Lux) Investment Funds. In the Netherlands, all funds referred to are UCITS and registered with the Dutch regulator, the AFM. This information is not an offer or solicitation of an offer for the purchase of investment shares in one of the funds referred to herein. Purchases of a fund should be based on the current Prospectus. The Instrument of Incorporation, Prospectus, Key Investor Information Document, annual or interim Investment Report and Financial Statements, are available free of charge, in paper form, from one of the following – M&G International Investments S.A., German branch, mainBuilding, Taunusanlage 19, 60325 Frankfurt am Main; the Austrian paying agent: Société Générale Vienna Branch, Zweigniederlassung Wien Prinz Eugen-Strasse, 8-10/5/Top 11 A-1040 Wien, Austria; the Luxembourg paying agent: Société Générale Bank & Trust SA, Centre operational 28-32, place de la Gare L-1616 Luxembourg; the Danish paying agent: Nordea Bank Danmark A/S Issuer Services, Securities Services, Hermes Hus, Helgeshøj Allé 33, Postbox 850, DK-0900, Copenhagen C, Denmark; Allfunds Bank, Calle Estafeta, No 6 Complejo Plaza de la Fuente, La Moraleja, 28109, Alcobendas, Madrid, Spain; M&G International Investments S.A. or its French branch; the French centralising agent of the fund: RBC Investors Services Bank France; or the Swedish paying agent: Nordea Bank AB (publ), Smålandsgatan 17, 105 71 Stockholm, Sweden. For Switzerland, please refer to by M&G International Investments Switzerland AG, Talstrasse 66, 8001 Zurich or Société Générale, Paris, Zurich Branch, Talacker 50, P.O. Box 5070, 8021 Zurich, which acts as the Swiss representative of the Schemes (the "Swiss Representative") and acts as their Swiss paying agent. For Italy, they can also be obtained on the website: www.mandigitalia.it. For Ireland, they are available in English language and can also be obtained from the Irish facilities agent, Société Générale SA, Dublin Branch, 3rd Floor IFSC House – The IFSC Dublin 1, Ireland. For Germany and Austria, copies of the Instrument of incorporation, annual or interim Investment Report, Financial Statements and Prospectus are available in English and the Prospectus and Key Investor Information Document/s are available in German. For Greece, they are available in English, except the Key Investor Information Document/s which is available in Greek, from the Greek Representative: Eurobank Ergasias S.A. 8, Othonos Street, 10557 Athens. Before subscribing investors should read the Prospectus, which includes a description of the investment risks relating to these funds. The information contained herein is not a substitute for independent investment advice. This financial promotion is issued by M&G International Investments S.A. Registered Office: 16, boulevard Royal, L-2449, Luxembourg. The Portuguese Securities Market Commission (Comissão do Mercado de Valores Mobiliários, the "CMVM") has received a passporting notification under Directive 2009/65/EC of the European Parliament and of the Council and the Commission Regulation (EU) 584/2010 enabling the fund to be distributed to the public in Portugal. **JUN 21 / W575109**