

ESG Review

Prudential

PruFund Planet 2

March 2023

Contents

Key facts Page 3

Fund information

ESG policy and alignment

Levels of ESG investing

Sustainable Development Goals

ESG factors

Environmental Page 4

Social

Governance

Levels of ESG investing

ESG integration Page 5

Sustainability focus

Impact focus

Top 10 holdings

Sustainable Development Goals Page 6

Engagement with corporates and/or funds

Resources

Prudential's ESG policy

Prudential
 PruFund Planet 2
 Patrick Norwood, CFA

Key facts

- This fund is part of a range of five funds with the same team and investment process behind them but each fund having a different level of expected risk and return.
- Each fund invests on a 'fund of funds' basis, across equities, fixed income, property and other 'alternative' asset classes.
- The underlying funds are classified by Prudential into three categories according to ESG outcome.
- Exclusions will have been applied to most of the underlying funds.

Fund information

Launch Date	26 July 2021
Manager	Treasury & Investment Office
Domicile	GBR
Assets	Active
Approach	Return Focused
Type	Pension / Offshore Bond / ISA

UN PRI signatory*	Yes
UK Stewardship Code signatory	Yes
IA Sector	ABI Unclassified
Morningstar Category	-
Defaqto Diamond Rating Type	-
Diamond Rating	-

*UN Principles for Responsible Investment (PRI)

ESG policy and alignment

Exclusions: Yes

Investment is on a 'fund of funds' basis. The M&G Treasury & Investment Office (T&IO) Product Framework has been developed to classify the underlying funds and is used as part of the investment manager selection and ongoing due diligence - investments are assessed based on the intention of each strategy relating to three types of outcome. These three outcome categories are: ESG Risk Focused; Opportunity Focused; and Solution Focused. See p5 for more detail on each.

Exclusion sectors are grouped as follows: coal, UN Global Compact violators, controversial weapons, tobacco, adult entertainment and gambling. Most of the funds held will have exclusions across all of these sectors or at the least controversial weapons. A few of the funds will not have explicit restrictions but, by virtue of their investment strategy, would be unlikely to invest in these sectors.

Levels of ESG investing



For full details, please refer to p5

Sustainable Development Goals (SDG) focus

Prudential has defined three environmental and three social 'outcome areas' for the Planet funds. These are: circular economy, environmental solutions and climate action; and social inclusion, better work & education and better health/saving lives. Each of these areas has exposure to one or more of the UN SDGs to varying degrees.

ESG factors

Environmental

Less than 1%	Between 1% and 10%	More than 10%
--------------	--------------------	---------------

Environmental Exposures	Product Involvement
Fossil Fuel	n/a
GMO	n/a
Nuclear	n/a
Oil Sands Extraction	n/a
Palm Oil	n/a
Pesticides	n/a
Thermal Coal	n/a

In the case of this fund, the percentage of its AUM covered by Morningstar data is relatively low, therefore product involvement data is not shown here. Prudential's own data and analysis, however, shows less than 1% exposure to all of the listed areas *with the exception of* fossil fuel and oil sands extraction, where they believe exposure to be between 1% and 10%.

Prudential state that the global energy mix is still heavily weighted towards fossil fuels and that they recognise the need to support a just energy transition. Hence they believe engagement through their fund managers will lead to a more sustainable outcome.

The oil sands extraction exposure is primarily via passive exposure to the two oil majors BP and Shell.

Social

Social Exposures	Product Involvement
Adult Entertainment	n/a
Alcohol	n/a
Animal Testing (Pharmaceutical)	n/a
Animal Testing (Other)	n/a
Controversial Weapons	n/a
Fur and Specialty Leather	n/a
Gambling	n/a
Military Contracting	n/a
Small Arms	n/a
Tobacco	n/a

As above, product involvement data is not shown here. Prudential's own data and analysis shows less than 1% exposure to all of the listed areas *with the exception of* animal testing, where they believe exposure to be between 1% and 10%.

In many cases animal testing is legally required, such as for pharmaceutical and chemical products. Prudential conduct ongoing screens to review and monitor their exposure against companies that have risks associated with animal welfare (with a specific focus on non-medical and animal farm sectors).

Prudential state that they will engage with asset managers that have been flagged by their animal welfare screens and may ask their asset managers to divest from investees that that have been flagged and are not willing to engage in the issue.

Governance

The PruFund Planet funds are managed by several internal (M&G) and external managers and almost all of them are signatories to the UN PRI. Prudential look to the managers they select to: engage with companies as active owners to help foster a more sustainable economy; participate in voting on key issues, including governance ones; and ensure that ESG is integrated into their investment processes. M&G's Responsible Investment team lead on company engagement on a cross-asset class basis.

Levels of ESG investing

Within this section, we look at how ESG has been integrated across the portfolio. We use the IA responsible investment framework across three levels: ESG integration, sustainability focus and impact (exclusions are covered on p3). The dials represent zero, low, medium or high exposure relative to our ESG Review universe. They are not mutually exclusive.

ESG integration



Strategies within the ESG Risk Focused category will manage ESG risks and seek to minimise negative outcomes for stakeholders, for example through negative exclusions or considering ESG risks when fundamentally appraising investment opportunities.

This category comprises around 10% of the portfolio and

includes cash in the form of the M&G ESG Aware Money Market Cash mandate, which seeks to deliver environmental and societal benefits (as well as liquidity and yield in line with money market rates).

M&G property funds may also be held in this category.

Sustainability focus



Funds in the Opportunity Focused category are expected to pursue ESG opportunities and should seek to create positive and explicit outcomes for broad stakeholders, for example by actively looking for ESG opportunities or selecting 'best in class' companies believed will outperform the market because they operate in a more sustainable way than peers over time.

This category forms just over 30% of the fund and includes the BlackRock regional ESG optimised equity funds, which aim to

provide better ESG scores than the respective regional index while still maintaining its risk and return characteristics.

The M&G Sustainable Global High Yield and Emerging Markets Corporate Bond funds are also held under this category. Both involve applying negative screens to remove companies involved in ethically questionable industries as well as positive screens to ensure selection of high ranking ESG securities.

Impact focus



Funds in the Solutions Focused category should use their capabilities to contribute to solutions to pressing social or environmental issues as well as seeking to create positive outcomes for underserved stakeholders.

This category forms nearly 60% of the portfolio. Examples of holdings within it include the Wellington Impact Bond and M&G Positive Impact funds. The Wellington fund invests in

the debt of companies, governments and organisations whose core businesses aim to address major social and environmental challenges through a bottom-up approach.

The M&G fund also follows a bottom-up process with the aim of generating a positive societal and/or environmental impact alongside a financial return. M&G's proprietary 'triple i' (impact, intention, investment) approach is used.

Top 10 holdings

Name	Asset Class	Classification	% of assets
Wellington Impact Bond	Fixed Income	Solution Focused	24.5
M&G ACS BlackRock ESG UK All Share	Equity	Opportunity Focused	7.6
M&G Impact Financing	Fixed Income	Solution Focused	6.6
M&G Real Estate	Property	Risk Focused	6.2
M&G Positive Impact	Equity	Solution Focused	5.2
Eastspring Sustainable Asia Bonds	Fixed Income	Opportunity Focused	4.9
M&G BlackRock ESG Asia Pacific ex-Japan	Equity	Opportunity Focused	4.7
M&G Sustainable Global High Yield Bond	Fixed Income	Opportunity Focused	3.8
M&G Sustainable Emerging Markets Corporate Bond	Fixed Income	Opportunity Focused	3.7
M&G Shared Ownership	Property	Solution Focused	3.6

Source: Prudential, 30 December 2022

Sustainable Development Goal (SDG) focus



Engagement with corporates and/or funds

Engagement is with the managers of the underlying funds. Funds are selected using both quantitative factors, including performance and holdings analysis, as well as qualitative research, covering the business, people, process and philosophy. Regular reviews take place on a quarterly basis.

The initial and ongoing due diligence process also incorporates assessment and challenge of the manager's ESG investment policies, practices and ambitions.

A top-down decision-tree approach is used to assess funds and determine which of the three 'outcome categories' each

fund best fits into. This is combined with a bottom-up view which involves assessing a sample of each of the manager's holdings.

Although Prudential don't engage directly with the investee companies of the Planet funds, they will: direct the managers to any areas of concern; ask the managers for examples of the engagement they have carried out; and monitor how the managers voted on ESG issues.

Resources

Portfolio management is conducted by the T&IO Multi Asset Portfolio Management Team. Mandate design and manager selection and oversight are performed by the T&IO Investment Manager Oversight Team of 9 people. Strategic asset allocation is determined by the T&IO Long Term Investment Strategy Team of 11.

Prudential have a dedicated ESG team of 5, the ESG and Regulatory Team. Prudential and M&G share many resources relating to ESG, including data providers Sustainalytics and MSCI as well as ISS, who provide proxy voting services.

Prudential's ESG policy

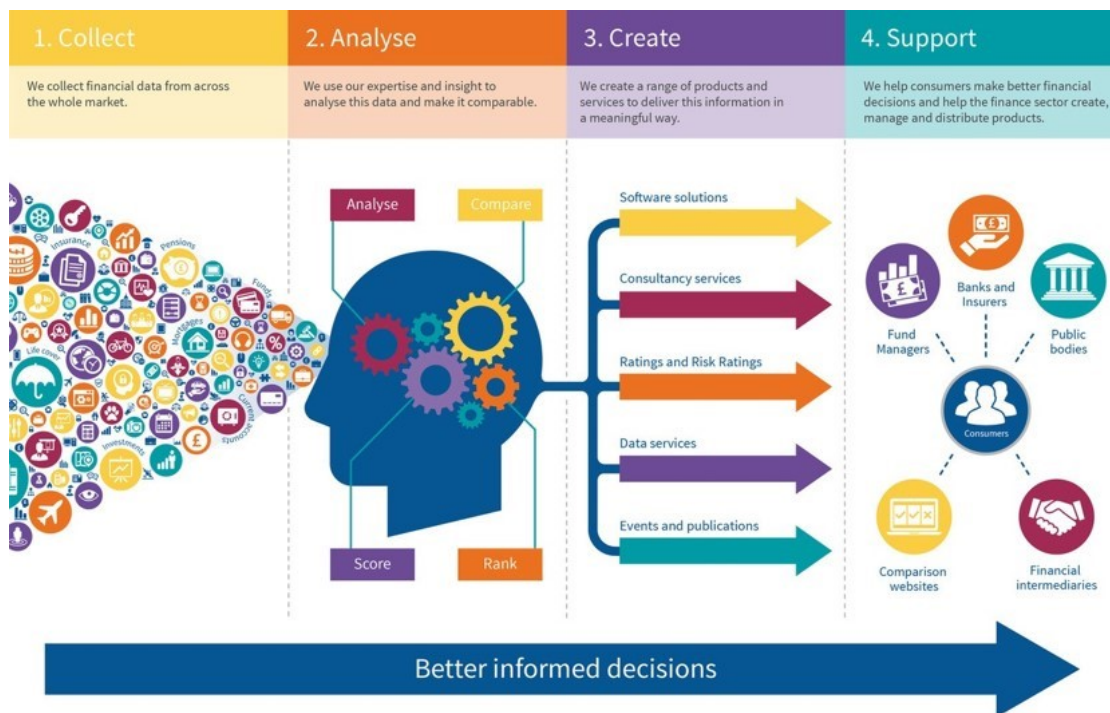
M&G are a signatory to the UN PRI and the UK Stewardship Code as an asset owner and as an asset manager. They aim to embed ESG across everything they do, from the way they manage assets to how they operate as a business. They have identified two ESG priorities of climate change and diversity and inclusion. They aim to be net zero carbon as a corporate entity by 2030 as well as achieving 40% female and 20% ethnicity representation in their leadership by 2025.

Prudential Assurance Company are now a signatory to the UN PRI and the UK Stewardship Code as an asset owner. They are aiming to achieve net zero carbon emissions across assets

under management and administration by 2050. They currently prohibit investment in certain companies linked to the development or distribution of particular controversial weapons, including internationally banned biological and chemical weapons, non-detectable fragments, depleted uranium munitions, cluster munitions and anti-personnel mines. This policy also extends to companies found to have aided in breaches of the nuclear non-proliferation treaty. Other positions are in implementation phase, including an exclusionary thermal coal policy and UN Global Compact violators policy.

About Defaqto

Defaqto is a leading financial information, ratings and fintech business. Its unbiased fund and product information provided as Star, Diamond and Service Ratings, coupled with its market-leading software solutions helps consumers, financial institutions and financial advisers make better informed decisions.



Defaqto has been operating for over 25 years and works independently. Defaqto employs over 60 analysts spending 400 hours a day monitoring the market, ensuring that the information provided is accurate and up to date.

Its independent fund and product information helps banks, insurers and fund managers with designing and promoting their propositions. Defaqto experts research, collect and continuously assess over 43,000 financial products in the UK of which nearly 10,000 are funds and fund families. Defaqto analyses over 18,000 funds including fund performance, risk-adjusted return ratios and costs and with Defaqto Engage, Defaqto's end-to-end financial planning tool, advisers can filter, sort, rank and analyse the options making the most suitable recommendation for their client.

In addition to its consumer-facing Star Ratings, Defaqto assists financial organisations in improving performance and better understanding the market through its suite of software solutions; Defaqto Engage, Matrix and Defaqto Compare. Defaqto's solutions are used across banking and insurance, Fund management, comparison websites and financial advisers.

© Defaqto Limited 2022. All rights reserved.

No part of this publication may be reprinted, reproduced or used in any form or by any electronic, mechanical, or other means, now known or hereafter invented, including photocopying and recording, or in any information storage or retrieval system without the express written permission of Defaqto. This ESG Review is for the professional use of professional financial advisers only, and is solely made to and directed at such financial advisers. It is intended to be used by them only to inform them in the independent financial advice they give to their clients, and then only if those financial advisers are not acting as agents for their clients or, at least, will not be acting as agents for their clients in purchasing an interest in the investment or fund which is the subject of this ESG Review (Purchasing the Investment).

This ESG Review is not for the use of, and is not made to, or directed at, the clients of professional financial advisers or anyone who may be considering purchasing the investment. No such clients or such other persons should rely on this ESG Review, and Defaqto shall not be liable in any respect whatsoever to such clients or other persons if they do so. This ESG Review was prepared by, and remains the copyright of, Defaqto.

Defaqto makes no warranties or representations regarding the accuracy or completeness of the information or views contained in this ESG Review. The views contained herein simply represent the views of Defaqto at the date of publication and both those views and the information set out herein may change without reference or notification to any recipient of this ESG Review.

Defaqto does not offer investment advice or make recommendations regarding investments and nothing in this ESG Review constitutes, is intended to constitute, or should be taken as, a recommendation or advice that any investment activity be undertaken by any person. Readers of this ESG Review must make their own independent assessment of whether it is appropriate to purchase the investment. Defaqto is not acting as financial adviser or in any fiduciary capacity in relation to any transaction in any investment. Nothing in this ESG Review constitutes, is intended to constitute, or should be taken as, financial promotion, any incentive or any inducement to engage in any investment activity whatsoever, including to purchase the investment. It is not the purpose or intention of this ESG Review to persuade or incite anyone to engage in any such investment activities.

Please contact your Defaqto Account Manager or call us on 01844 295546

defaqto.com/advisers

© Defaqto Limited 2022. All rights reserved.

No part of this publication may be reprinted, reproduced or used in any form or by any electronic, mechanical, or other means, now known or hereafter invented, including photocopying and recording, or in any information storage or retrieval system without the express written permission of the publisher. The publisher has taken all reasonable measures to ensure the accuracy of the information and ratings in this document and cannot accept responsibility or liability for errors or omissions from any information given and for any consequences arising.