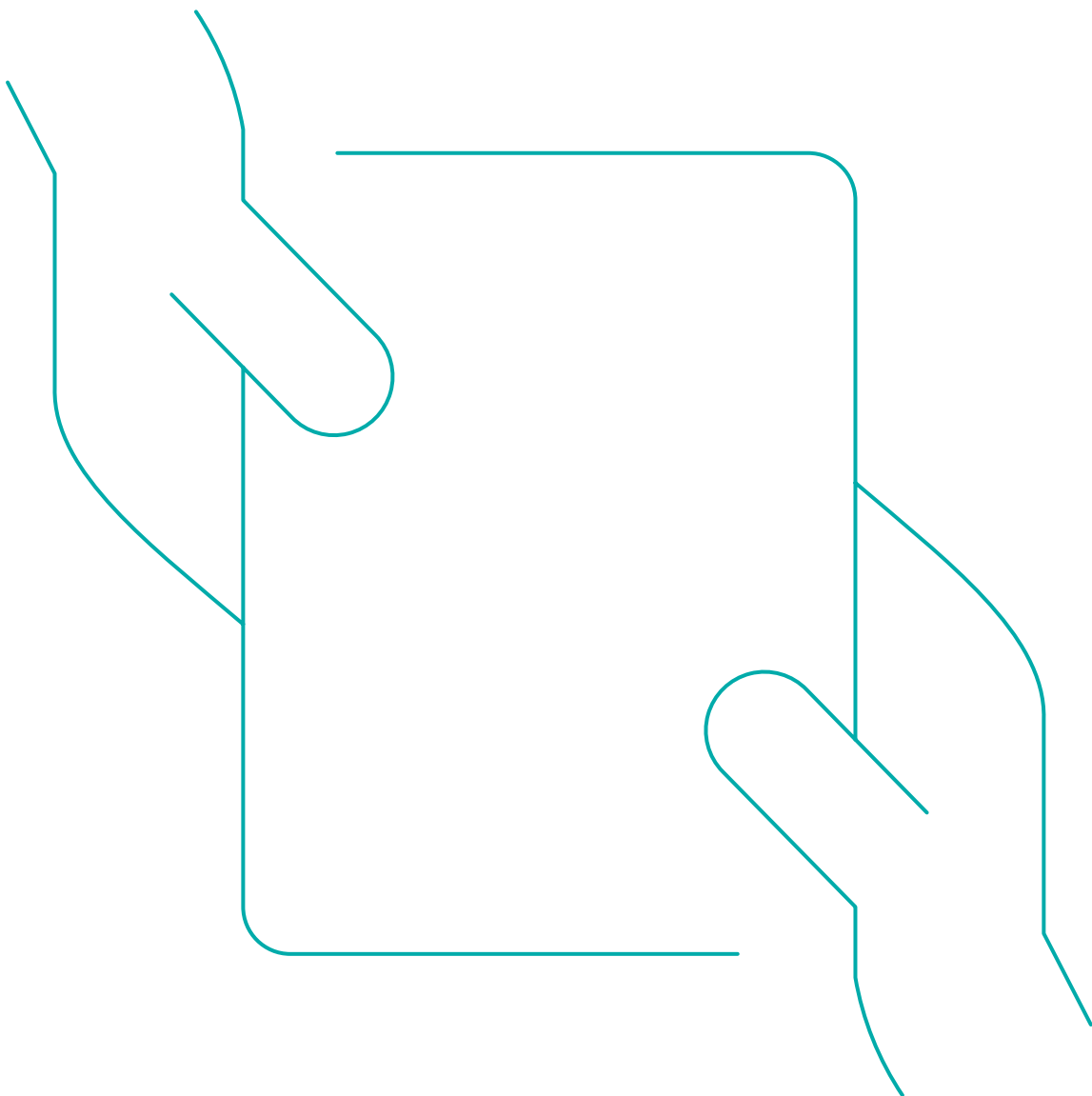


Key Features of the International Prudence Bond (Not for use in UK, Spain or Belgium)



If you are applying on, or after, 1 January 2018, it is important that you read our Key Information Document and relevant Investment Option Document(s).

Contents

About the International Prudence Bond (Not for use in UK, Spain or Belgium)	3	What are the charges and costs?	9
Its aims	3	What's a Market Value Reduction?	10
Your commitment	3	How will I know how my bond is doing?	10
Risks	3	What if I want to cancel my bond?	10
Other documents you should read	4		
Questions & Answers About your bond	5	Questions & Answers Your life cover	11
Who can take out an International Prudence Bond?	5	What is the life cover?	11
Where can I invest my money?	5	Whose lives can I cover?	11
Can I switch money between funds?	6	How much will the life cover pay out?	11
Can I withdraw money from my bond?	6	Nomination of beneficiaries (Policyholders in France only)	11
How much will I get when I cash in my bond?	7	How does the life cover affect my bond?	11
Do I pay tax on my bond?	8	Other information	12
		Get in touch	14

We'd like everyone to find it easy to deal with us. Please let us know if you need information about our plans and services in a different format.

All our literature is available in audio, large print or braille versions. If you would like one of these please contact us using the details on the last page.

It's important for you to decide whether this product is right for you and what funds to choose.

If you are applying on, or after, 1 January 2018, please read our Key Information Document and relevant Investment Options Document(s). These include important information which may help you make up your mind.

You should receive them with your application form. Please keep these documents safe for future reference or go to our website at www.prudential-international.com/priip-docs/ES-PIPB for the most up to date version.

About the International Prudence Bond

(Not for use in UK, Spain or Belgium)

The International Prudence Bond is an investment bond which allows you to invest in a range of investments with the potential for growth. It allows you to take tax-efficient withdrawals, while providing an element of life cover.

Important Information

Access to the Prudential PAC Sterling, PAC Euro and PAC US Dollar With-Profits Funds is no longer available to new customers investing in International Prudence Bond (IPB) on or after 11/09/2017.

However, if you are an existing customer pre 11/09/2017, you will still be able to top up or switch into the Prudential With-Profits PAC Sterling, PAC Euro and PAC US Dollar Funds.

It is important to note we are not closing the Prudential With-Profits Fund. The underlying fund and ongoing management of the fund will remain the same and access will continue to be available to the With-Profits Fund through the PruFund range of funds.

If you are in any doubt about this product please speak to your financial adviser.

Reference to With-Profits within this document is only applicable to policyholders pre 11/09/17.

Its aims

What this bond is designed to do

The International Prudence Bond allows access to a range of unit-linked investment funds with the aim of increasing the value of the money you invest over the medium to long term.

Your commitment

What we ask you to do

You need to make a single investment of at least £20,000, €25,000 or US\$35,000 when you take out your bond.

The minimum top-up is £15,000, €20,000 or US \$25,000.

- Your bond is set up as a group of identical policies. The standard number is 20, although you can choose to have more or fewer. You can cash in each policy separately.

Risks

What you need to be aware of

- The value of your investment can go down as well as up so you might get back less than you put in.
- If the total charges and costs are more than any overall growth achieved, your bond will fall in value, possibly to even less than you have invested.

- If you cancel your bond or top-up investment within 30 days you may get back less money than you paid in. We explain this in the section "What if I want to cancel my bond?".
- Each of the investment funds available for the International Prudence Bond has its own specific risks, which will influence how it performs and will therefore affect the value of your bond. You should make sure you understand the choices you make and the risks involved. Your financial adviser can give you more information.
- In exceptional circumstances, a transaction (such as a full or partial cash-in) may be delayed which may mean you face a delay in gaining access to your money. You can find more information in the **Contract Conditions**.
- Inflation will reduce what you could buy in the future.
- You might need to pay tax depending on your circumstances and the options you choose. Tax rules can also change in the future.
- Fluctuations in exchange rates could affect the value of your investment or withdrawals.

Other documents you should read

For applications made on, or after 1 January 2018, it is important that you read your Key Information Document and relevant Investment Option Document(s). If you want more information, please read the following documents. We have highlighted when they are relevant throughout this document.

They are available from your adviser, or direct from us. Our contact details are on the last page.

- **Contract Conditions**

Gives you the full terms and conditions of the contract.

- **Statement of Charges**

Gives details on charges applicable to your plan.

- **The Fund Guide for the International Investment Bond and International Prudence Bond**

This explains your investment choices

- **Your guide to investing in the PruFund Range of Funds**

This outlines the basic features of the PruFund Range of Funds.

- **The PruFund Range of Funds: Guarantee Options**

This shows the guarantee options associated with the PruFund Range of Funds.

Questions & Answers

About your bond

Who can take out an International Prudence Bond?

If you're 18 or over you can take out an International Prudence Bond. You can take it out on your own, or jointly with another person.

Where can I invest my money?

You and your financial adviser can choose which funds you would like from a specified range. You can invest in up to ten funds at any one time.

There are three types of fund available:

- the PAC With-Profits Range of Funds.
- the PruFund Range of Funds – you can find more information on these in “**Your guide to investing in the PruFund Range of Funds**”; and
- other unit-linked funds.

For more information about all the funds you can choose from, please read the **Fund Guide for the Prudential International Investment Bond and International Prudence Bond**.

There are limits on how much you can invest across the PAC With-Profits Range of Funds and the PruFund Range of Funds. The maximum you can invest across these funds (in one or more bonds) is £1,000,000, or £1,500,000 or US \$1,500,000. If you own the bond jointly with someone else, you will each be treated as having invested the full amount.

So if you jointly invest £1,000,000 into these funds, it will count as the maximum for both of you. This limit includes any top-up investments into these funds.

You are unable to top-up a PruFund Protected Fund.

Unit pricing basis

When you invest in one of our funds, your money buys units in that fund. The price of these units is primarily determined by the value of the assets held in the fund, but also depends on whether, overall, more money is going into the fund or coming out of it.

If there is a net inflow of money, the fund will be buying assets. This means that the unit price will be influenced by the purchase price of the underlying assets in the fund. Conversely, if there is a net outflow, it will be influenced by the sale price of the underlying assets, which is lower than the purchase price.

Over time, as the flows of money change, the unit price will fluctuate between a purchase price basis and a selling price basis. At times, there may be a sharp movement between the two, meaning the unit price could rise or fall significantly. This will affect the price you pay to buy units when you invest in a fund or the value you receive from selling, if you are switching out of a fund or cashing in your bond.

The difference between purchase and selling prices is generally largest for funds investing in property, smaller companies and developing markets. You can find more information in the **Contract Conditions** for the bond.

How funds invest

Some of the Prudential International funds listed in your fund guide may invest in 'underlying' funds or other investment vehicles. Have a look at a fund's objective and that will tell you where it invests – including if that's in an underlying fund or funds.

If the Prudential International fund is investing in just one underlying fund then it's what's known as a 'mirror' fund, as the performance of the Prudential International fund broadly aims to reflect the performance of the underlying fund it invests in. The performance of our Prudential International fund, compared to what it's invested in won't be exactly the same. The differences between the underlying fund and our fund can be due to:

- additional charges,
- cash management (needed to help people to enter and leave our fund when they want),
- tax,
- timing of investments (this is known as a fund's dealing cycle, it varies between managers and can be several days).

Information relating to sustainability risks and how they could impact returns

We make a range of funds available through this product. In determining this range, no specific criteria relating to sustainability risks are taken into account. However, the funds themselves may be constructed and managed taking into account sustainability risks.

The following types of sustainability risks are likely to impact on fund returns:

- Environmental risk examples include; climate change, increasing water scarcity and waste management challenges.
- Social risk examples include; product safety, supply chain management and labour standards, health and safety and human rights, employee welfare, data and privacy concerns and increasing technological regulation.
- Governance risk examples include; board structures and effectiveness, management incentives and management quality.

These could, for example, impact on asset types in the following ways

Asset type	Potential impact of sustainability risks
Equities and property	Some markets and sectors will have greater exposure to sustainability risks. For example, climate change can damage property which the fund owns, thereby impacting the cash flow and capital value of the fund. Sustainability risks may also impact market prospects in which a fund operates, thereby affecting the market valuation of the fund.
Fixed interest	Sustainability risks can affect the borrowers' cash flows and therefore the ability for people to meet their debt obligations.

Details on each fund's strategy, asset objectives and asset mix is provided in fund documentation made available by the fund's manager, including how they take into account sustainability risk where applicable.

At this time, due to a lack of available data related to the underlying investments, it cannot be confirmed whether this product takes into account the EU Sustainable Finance Taxonomy criteria for environmentally sustainable economic activities.

Can I switch money between funds?

Yes. However, you can't invest in more than ten funds at any one time.

The minimum amount you can switch is £500, €750 or US\$750. If you're not switching the full value of your investment from a particular fund, you need to leave at least £500, €750 or US\$750 in that fund.

You can switch up to 20 times in any 12-month period without charge. After that, we will charge you. For more details on this charge, please read the **Statement of Charges**.

For most funds, you can switch money whenever you like. However, the PAC With-Profits Range of Funds and the PruFund Range of Funds have some restrictions.

PAC With-Profits Range of Funds

If you switch money out of the PAC With-Profits Range of Funds, we may apply a Market Value Reduction (MVR).

You cannot switch between funds within the PAC With-Profits Range of Funds.

The PruFund Range of Funds

There are restrictions on when you can move money into, out of or between the PruFund Range of Funds. Also, if you are invested in one of the PruFund Protected Funds and switch money out of the fund, your Guaranteed Minimum Fund will be reduced proportionately. For more information on switching terms, please read your personal illustration and "**Your guide to investing in the PruFund Range of Funds**".

Can I withdraw money from my bond?

You can make one-off and regular withdrawals from your bond. The minimum amount of any withdrawal is £75, €112.50 or US \$112.50.

If you're not withdrawing the full value of your investment from a particular fund, you must leave at least £500, €750 or \$750 in that fund.

If you ask us to pay you in any way other than by cheque, we may charge you for any costs incurred.

One-off withdrawals

You can make one-off withdrawals at any time.

If you make a one-off withdrawal within the first five years of your bond, or within five years of a top-up, we will apply an Early Cash-in Charge. For more information, please read the section “What are the charges and costs?”.

Regular withdrawals

We can pay regular withdrawals to you at these intervals:

- every month,
- every three months,
- every six months, or
- every 12 months.

You can take:

- a fixed amount – which needs to be at least the minimum listed above,
- a percentage of the total amount you have invested in your bond, or
- a percentage of the full value of your bond.

The maximum regular withdrawal you can take in any 12-month period is the greater of:

- 5% of the full value of your bond when you start taking regular withdrawals, or
- 5% of the total amount you’ve invested in your bond.

Regular withdrawals are taken evenly across all the policies in your bond. For one-off withdrawals, you can alternatively choose to cash in individual policies.

Withdrawals and top-ups

If you’ve topped up your bond and you make a withdrawal, we take your withdrawal from each investment proportionately.

PAC With-Profits Range of Funds

If you withdraw money from the PAC With-Profits Range of Funds, we may apply a MVR.

If you cancel a regular withdrawal request, we reserve the right not to allow you to restart regular withdrawals

subsequently if you have elected to take them wholly or partly from a fund within the PAC With-Profits Range of Funds. For example, we may exercise this right if, at the time you ask to re-start regular withdrawals, an MVR is in force for withdrawals from any of the funds within the PAC With-Profits Range of Funds.

However, this rule does not effect withdrawals from unit linked funds. You would also still be able to make partial withdrawals at any time.

Similarly, we reserve the right not to allow you to change your selected fund(s) for regular withdrawals to a fund within the PAC With-Profits Range of Funds. Again, we may exercise this right if, at that time, an MVR is in force.

This is to help with our overall management of the PAC With-Profits Fund and to help ensure all policyholders are treated fairly.

The PruFund Range of Funds

There are restrictions on when you can move money out of the PruFund Range of Funds. If you’re invested in one of the PruFund Protected Funds and take money out of the fund, your Guaranteed Minimum Fund will be reduced proportionately. For more information, please read your personal illustration and “**Your guide to investing in the PruFund Range of Funds**”.

How much will I get when I cash in my bond?

The amount will depend on:

- how much you’ve invested,
- how long you’ve invested for,
- any withdrawals you’ve made,
- how your investments have performed,
- whether we’ve added any Annual Growth Reward,
- the charges that have been taken from your investment.

If you have a personal illustration, it will show how much you could get, based on example growth rates and your chosen investment.

Annual Growth Reward

Starting at the end of year 1, an Annual Growth Reward of 0.1% of the value of your bond will be added each year that you make no withdrawals.

PAC With-Profits Range of Funds

If you've invested in any of the funds within the PAC With-Profits Range of Funds, the value of your investment will depend on the bonuses we've added to it and whether any MVR applies.

The PruFund Range of Funds

The PruFund Protected Funds include a guarantee which takes effect on a selected anniversary of your bond. This may affect the amount you get back. For more information, please read "**Your guide to investing in the PruFund Range of Funds**".

Do I pay tax on my bond?

This will depend on your individual circumstances and country of residence for tax purposes, so for specific advice you should speak to your financial adviser.

Irish Exit Tax

If you become resident in Ireland, we'll deduct Irish Exit Tax from your bond:

- every eight years;
- when any benefits are paid out; or
- when the owners of the bond change.

We pay this tax to the Irish tax authorities.

If you're not resident in Ireland, you don't have to pay Irish Exit Tax provided you complete the "Declaration of residence outside Ireland" which is contained within the application form.

Tax rules for trusts

If your bond is written under trust, special tax rules apply. For more information, please speak to your financial adviser.

What are the charges and costs?

We charge you for setting up, managing and administering your bond.

The charges and costs may change in future and they may be higher than they are now. Further information can be found in the Contract Conditions. All monetary charges may increase annually in line with the Irish Consumer Price Index and movements in relevant exchange rates.

Establishment Charge	<p>For each investment you make into the bond, we will take an establishment charge for the first five years following the investment. In each case, this is 0.3% taken quarterly in advance and based on the value of the relevant investment at the time we take each charge.</p>										
Fund charges and costs	<p>All of the funds have an Annual Management Charge. In addition to our charges, there may be further costs incurred, which can vary over time. Where these are applicable, they are paid for by the relevant fund and will impact on its overall performance.</p> <p>The Annual Management Charges and the current expected level of these further costs are set out in the current "Statement of Charges" for this product but they may vary over time.</p>										
Switch Charge	<p>You can switch money between funds without charge up to 20 times in any 12-month period. After that, we will charge you. For more details on this charge, please read the Statement of Charges.</p>										
Early Cash-in Charge	<p>If you cash in all or part of your bond within five years of making an investment we will deduct an Early Cash-in Charge as follows.</p> <table data-bbox="456 1290 711 1514"> <tr> <td>1st year</td> <td>10%</td> </tr> <tr> <td>2nd year</td> <td>8%</td> </tr> <tr> <td>3rd year</td> <td>6%</td> </tr> <tr> <td>4th year</td> <td>4%</td> </tr> <tr> <td>5th year</td> <td>2%</td> </tr> </table> <p>These charges also apply to any top-ups.</p> <p>In each case, the percentage is based on the current value of the relevant investment.</p>	1st year	10%	2nd year	8%	3rd year	6%	4th year	4%	5th year	2%
1st year	10%										
2nd year	8%										
3rd year	6%										
4th year	4%										
5th year	2%										
PruFund Protected Funds – Guarantee Charge	<p>The PruFund Protected Funds have an additional annual charge for the guarantee. We take this charge monthly in arrears by cancelling units.</p> <p>For more information on this charge, please refer to "The PruFund Range of Funds: Guarantee options".</p>										

Charges for guarantees – With-Profits Funds

There is a charge to pay for all the guarantees the With-Profits Fund supports. We guarantee not to apply a Market Value Reduction (MVR) when payments are made because of death. Our current MVR practice, which is not guaranteed, may include additional circumstances when an MVR is not applied. For more information, please read “What’s a Market Value Reduction?” on this page.

The total deduction for guarantee charges over the lifetime of your bond is not currently more than 2% of any payment made from the fund. Our charges may vary in the future and may be higher than they are now. Charges may vary if, for example, the long term mix or type of assets held within the With-Profits Fund is changed.

You won't see this charge on your annual statement because we take it by making a small adjustment to regular and final bonuses.

What’s a Market Value Reduction?

If you take money out of the With-Profits Funds, we may reduce the value of your fund if the value of the underlying assets is less than the value of your bond including all bonuses.

This reduction is known as a Market Value Reduction (MVR). It is designed to protect investors who are not taking their money out and its application means that you get a return based on the earnings of the With-Profits Fund over the period your payments have been invested.

We apply the MVR to your bond's value including regular and final bonuses. A MVR will reduce the amount payable on full, partial or regular withdrawals and you may even get back less than you have invested in your bond.

We guarantee not to apply a MVR on any payments made due to death.

Our current practice on applying a MVR

We may apply a Market Value Reduction to withdrawals, including switches on all investments.

We reserve the right to change our current practice on Market Value Reductions at any time, without prior notice, and this would apply to existing bonds and any new bonds or top-ups.

Examples of reasons for a change would include significant changes in the investment market or because the number of people moving out of the fund increases substantially.

If you have a personal illustration, it will show how charges and costs affect your bond, based on example growth rates and your chosen investment, and will also show details of how much we will pay your financial adviser.

How will I know how my bond is doing?

We'll send you an annual statement. If you want to know the value of your bond at any time, please call us on **+353 1 476 5000**.

What if I want to cancel my bond?

You can cancel your bond within 30 days of receiving your documents. These include a Cancellation Notice and we will also send you a Cancellation Notice for any top-ups you make.

To cancel your bond or top-up, please complete and return the Cancellation Notice, or write to us at:

**Operations Department
Prudential International
Montague House
Adelaide Road
Dublin 2
Ireland**

Please include your bond reference number.

If more than one person owns the International Prudence Bond, we will accept cancellation within 30 days by either of the owners, whether they're acting alone or jointly.

If you decide to cancel and you've invested in our PAC With-Profits Range of Funds or PruFund Range of Funds, you'll get back all the money you invested in those funds. If you've invested in any of our other funds, you may not get all your money back if any of the funds have fallen in value. In that case, we will refund the amount of your payment adjusted for the fall in the unit prices of those funds. This means that you may get back less than you invested.

Questions & Answers

Your life cover

What is the life cover?

Your bond comes with a small amount of life cover. You can cover the lives of up to ten people.

If you cover one life only, we'll pay out a lump sum when that person dies.

If you cover more than one person, you can choose for us to pay the lump sum:

- when the first person covered dies, or
- when the last person covered dies.

The life cover will end if you cash in your bond.

Whose lives can I cover?

Anyone covered must be aged between 3 months and 89 years. You can be one of the people covered, but you don't have to be.

How much will the life cover pay out?

Where you choose to cover more than one person, the amount we will pay on death is based on the age of:

- the oldest person covered if the life cover is payable when the first person dies; or
- the youngest person covered if the life cover is payable when the last person dies.

The life cover will pay out either:

- 101% of the full value of the units relating to the investment – if the relevant person (ie the oldest or youngest as above) was 75 or under when you made the investment, or
- 100.1% of the cash-in value of the bond – if the relevant person was 76 or over when you took out the bond.

If you top up your bond, we will base the life cover for the top-up on the age of the people covered at the time that you make the top-up.

Where the life cover is based on the cash-in value of the bond, an Early Cash-in Charge will apply if the life cover is paid within five years of any investment into the bond. The charge will be as shown under the section "What are the charges and costs?".

Nomination of beneficiaries (Policyholders in France only)

A beneficiary nomination can be made in writing at any time. You can cancel or replace your nomination, providing your beneficiary has not formally accepted the nomination. We will pay any death benefits due to the person shown on our records as your nominated beneficiary. If no one has been nominated, the death benefits will be payable in accordance with the **Contract Conditions** of your policy. You should seek professional advice before nominating a beneficiary.

How does the life cover affect my bond?

Your bond ends when we pay the life cover.

Other information

Compensation

Prudential International exceeds its capital requirements and is financially strong. However, in the unlikely event that Prudential International, the fund manager, Prudential in the UK or the custodian of fund assets should fail to meet their financial obligations, You may face financial loss.

Prudential International products will not be covered by a government-backed financial guarantee scheme, including the FSCS in the UK.

Financial strength

Prudential meets regulatory standards for meeting its financial obligations. You can read our solvency and financial conditions reports at www.pru.co.uk/about_us, or if you contact us using the details on the last page, we can post some information to you.

Terms and conditions

This Key Features Document gives a summary of your plan. Full details are set out in our **Contract Conditions** which is available on request using our contact information on the last page, and will also be sent to you when your plan starts.

Conflict of interest

We want to make sure that we uphold our reputation for conducting business with integrity. If we become aware that our interests may conflict with yours we will take all reasonable steps to manage it in an appropriate manner.

We have drawn up a policy to deal with any conflicts of interest. If you would like to know the full details of our Conflict of Interest Policy, please contact our Customer Service Team using the contact details on the back page.

Law

The law of England and Wales applies to this contract.

Our regulators

The address of the regulator in Ireland which authorises Prudential International is:

**Central Bank of Ireland
New Wapping Street
North Wall Quay
Dublin 1
D01 F7X3**

Communicating with you

Our plan documents and terms and conditions are in English and all our other communications with you will be in English.

How to make a complaint

If you have a complaint, please get in touch with us and we will do everything we can to resolve it. You can also ask us for details of our complaints handling process. Our contact details are in the 'Get in touch' section at the back of this document.

If you're not satisfied with our response, you can take your complaint to the Financial Services & Pensions Ombudsman who help settle individual disputes between consumers and businesses providing financial services:

The Financial Services & Pensions Ombudsman
Lincoln House
Lincoln Place
Dublin 2
D02 VH29
Ireland

Telephone: + 353 1 567 7000

www.fspo.ie

Making a complaint to the Financial Services & Pensions Ombudsman will not affect your legal rights.

How we use your personal information

In the Application Form for your bond we set out, within the Privacy Fair Collection Notice:

- details regarding how and why we use your personal information (including sensitive personal information); and
- who we may share it with; and
- Your rights around personal information.

For a copy of our latest Privacy Fair Collection Notice, please visit www.prudential-international.com/mydataprivacyfaircollectionnotice

To access this website, all characters must be typed in lowercase format.

If you require further information You can: write to the Data Protection Officer at:

Prudential International
Montague House
Adelaide Road
Dublin 2

Call us on: +353 1 483 0500

Get in touch

If you want to contact us before you invest you can write or phone us:



Write to: **Operations Department, Prudential International, Montague House, Adelaide Road, Dublin 2, Ireland**



Phone: + **353 1 476 5000** Monday to Friday 9am-5pm GMT (we are not open on public holidays). We might record your call to make sure our service is up to standard.



If you are a deaf customer, who is also a British Sign Language (BSL) user, you can contact us using a Video Relay service. The service, provided by SignVideo, connects customers to fully qualified, registered NRCPD interpreters who will relay your conversation with a member of our customer service team.

www.pru.co.uk/contact-us/signvideo

There is no cost for using this service to call Prudential and we're available to help you Monday to Friday, 8am to 6pm.



For more information please visit www.prudential-international.com

Keep in touch

It's important that we keep in touch so, if you change your address or any of your contact details, please let us know.

www.prudential-international.com

The registered office of Prudential International is in Ireland at Montague House, Adelaide Road, Dublin 2. Prudential International is a marketing name of Prudential International Assurance plc, a life assurance company operating from Ireland. Registration No. 209956. Prudential International Assurance plc is authorised by the Central Bank of Ireland. Prudential International is part of the same corporate group as The Prudential Assurance Company Limited. Both The Prudential Assurance Company Limited and Prudential International are direct and indirect subsidiaries respectively of M&G plc, a company incorporated in the United Kingdom. The Prudential Assurance Company Limited is not affiliated in any manner with Prudential Financial, Inc, a company whose principal place of business is in the United States of America or Prudential plc, an international group incorporated in the United Kingdom.