

# Investment grade credit – is it time for a comeback?

Ben Lord and Matthew Russell

February 2023

After last year's significant re-pricing in bond yields, we see compelling value in investment grade credit. For perhaps the first time in over a decade, we believe investors are being well paid to take both credit and interest rate risk. By providing exposure to both credit spreads and interest rates, we believe corporate bonds should also be well-equipped to withstand a variety of different market conditions, from a prolonged economic slowdown to a faster-than expected return to growth.

## Back in positive territory

This current window of opportunity is perhaps best illustrated by the fact that corporate bond yields are today all in positive territory – the era of negatively yielding corporate debt is finally at an end (Figure 1).

Figure 1. End of an era – corporate bond yields are all in positive territory

Past performance is not a guide to future performance

Bloomberg aggregate negative yielding debt in USD trillions



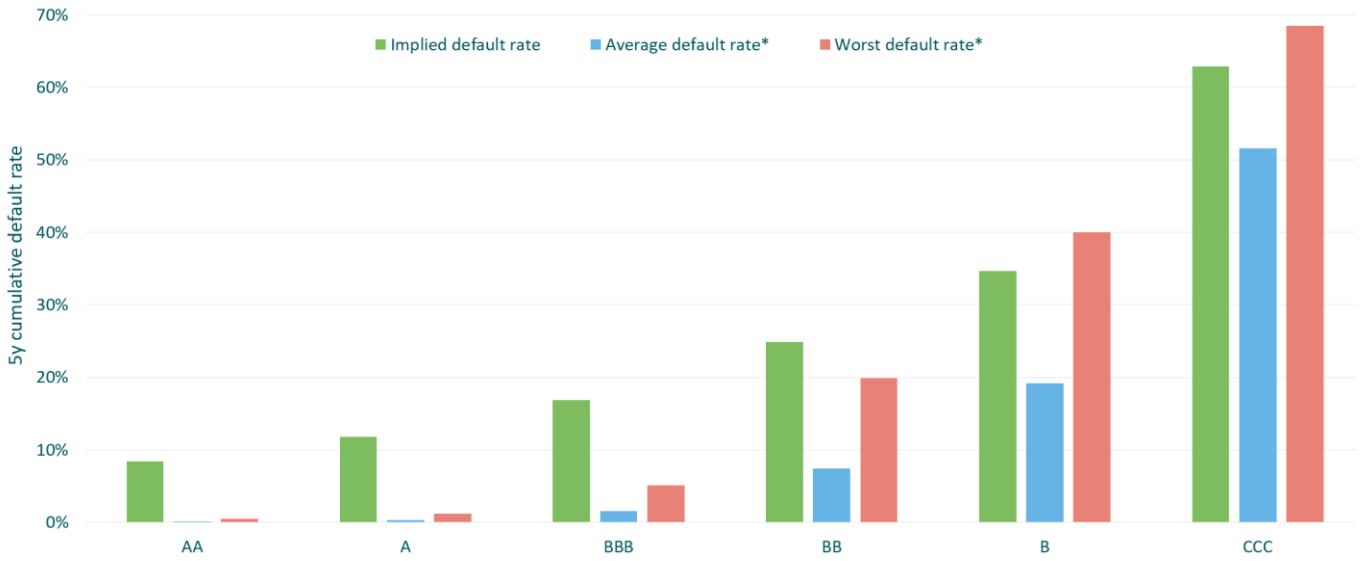
Source: M&G, Bloomberg, 04 January 2023

## Low expected default rates

Investment grade corporate bonds also look well placed to withstand a more recessionary environment – despite the uncertain economic outlook, corporate fundamentals remain strong, and we expect default rates to stay low. While spreads have tightened a little in recent weeks, implied default rates remain well in excess of the worst default experience (Figure 2). This is especially in the BBB space, where we believe investors continue to be very well-compensated against the risk of default.

Figure 2. Fearing the worst – implied level of corporate defaults is higher than historical levels

Past performance is not a guide to future performance



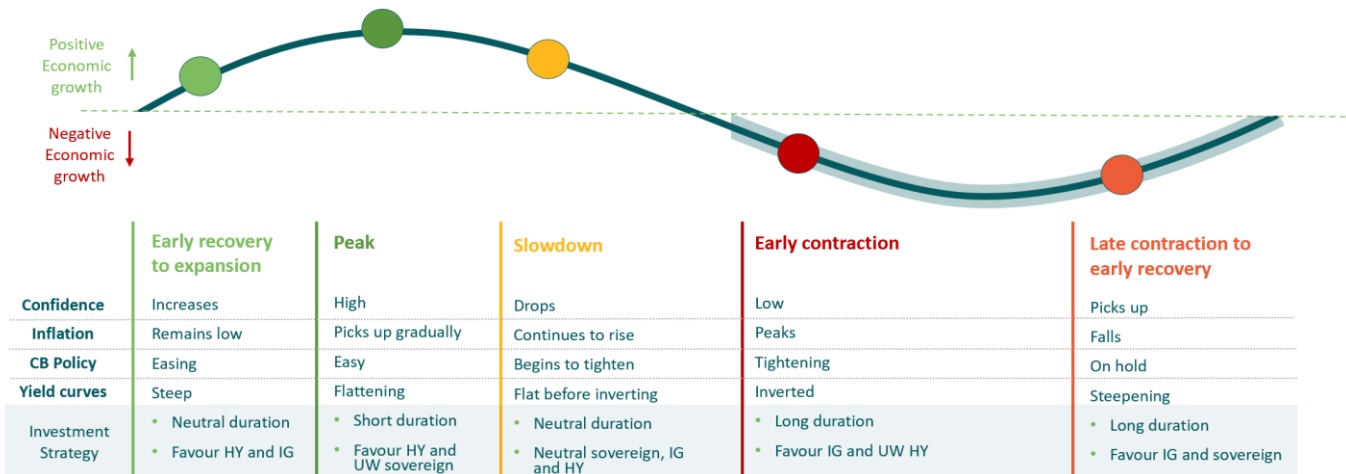
\*assuming 40% recovery rate for IG and 30% recovery rate for HY

Source: Bloomberg, Deutsche Bank, ICE indices, S&P, 31 October 2022.

### Well-placed in a late cycle environment

While investors will have their own views on precisely where we are in the economic cycle, the direction of travel seems clear and most would expect to see a period of slowing global growth over the coming months. In this environment, we believe it makes sense to start moving up the credit spectrum by switching from high yield to investment grade. Investors may also consider adding duration as we move into the early contraction phase, the period where inflation peaks and investor confidence starts to wane. (Figure 3).

Figure 3. Riding the economic cycle



Source: M&G, 2022

## Natural diversification qualities

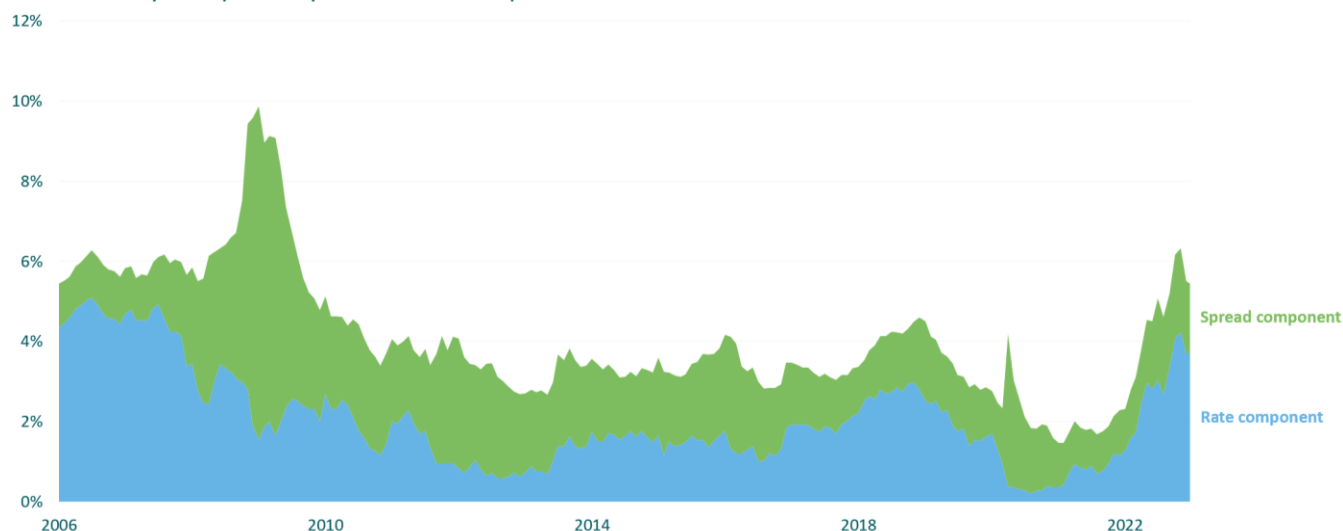
One of the most attractive features of corporate bonds is that they provide exposure to both the risk-free rate (government bond yields) and a risk premium (the spread between the yield of government bonds and corporate bonds). These two elements typically – though not always – move in opposite directions to each other, providing almost an in-built hedge against adverse market conditions.

By 2020, the risk-free rate had largely disappeared and, as a consequence, we were very cautiously positioned over that period (Figure 4). The good news is that the risk free rate is back today and this makes us much more positive on the asset class. In the event that the economic slowdown turns out to be more severe than anticipated, we would expect the risk-free rate to fall, and this should at least partly offset any weakness in credit markets.

Figure 4. Natural diversification elements of corporate bonds – rate and spread components provide separate drivers

Past performance is not a guide to future performance

Investment Grade: yield components - 5 year treasuries and credit spread



Source: Bloomberg, 22 December 2022

## Compelling value in financials

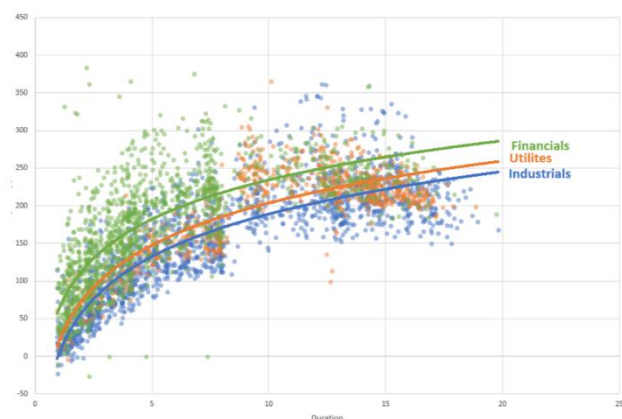
The investment grade universe today is deep and diverse, and recent volatility has created significant valuation dispersion across both sectors and individual companies – as a result, we are currently finding a wealth of opportunities to identify mispriced securities through in-depth credit analysis.

One area where we are finding compelling value right now is in financials, especially in banks. We believe that banks today are in a much better shape than in 2008, being strongly capitalised and well placed to withstand a recessionary environment. Banks also generally benefit from higher interest rates, since they are able to capture a wider spread between their lending and deposit rates. Despite these positive factors, banks currently trade at a significant discount to other sectors having sold off sharply in 2022 (Figure 5).

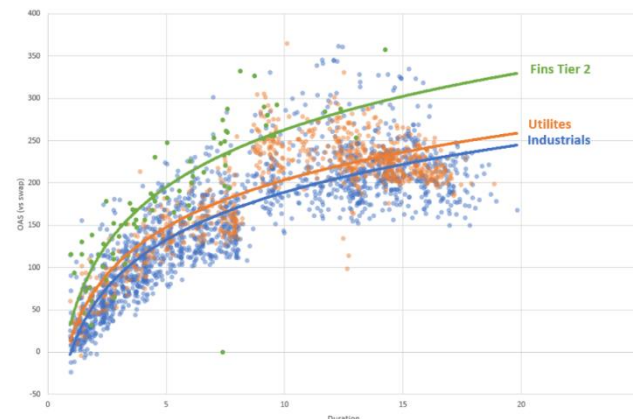
Figure 5. Compelling relative value in financial sector

Past performance is not a guide to future performance

Single A USD bonds



Single A USD bonds



Source: Bloomberg, 22 December 2022

## Time to look again at credit

We believe there is currently attractive value to be found in investment grade credit, with investors being well paid to take risk. By providing exposure to both credit spreads and interest rates, we believe corporate bonds should also be well-equipped to withstand a variety of different market conditions, from a prolonged economic slowdown to a faster-than expected return to growth.

While further volatility cannot be ruled out in the short term, from a long-term perspective we think highly rated corporate bonds provide compelling risk/return dynamics in a late cycle environment. As a deep and diverse investment universe, we are currently seeing significant spread dispersion in the investment grade market, and we believe well-resourced active managers should be well-placed to capture these value opportunities.

Investments in bonds are affected by interest rates, inflation and credit ratings. It is possible that bond issuers will not pay interest or return the capital. All of these events can reduce the value of bonds held by the portfolio. High yield bonds usually carry greater risk that the bond issuers may not be able to pay interest or return the capital.

The value of investments will fluctuate, which will cause prices to fall as well as rise and you may not get back the original amount you invested. Past performance is not a guide to future performance. The views expressed in this document should not be taken as a recommendation, advice or forecast.

**For Investment Professionals, Institutional Investors and Professional Investors only. Not for onward distribution. No other persons should rely on any information contained within.** This information is not an offer or solicitation of an offer for the purchase of shares in any of M&G's funds. **Distribution of this document in or from Switzerland is not permissible with the exception of the distribution to Qualified Investors according to the Swiss Collective Investment Schemes Act, the Swiss Collective Investment Schemes Ordinance and the respective Circular issued by the Swiss supervisory authority ("Qualified Investors"). Supplied for the use by the initial recipient (provided it is a Qualified Investor) only.** The Portuguese Securities Market Commission (Comissão do Mercado de Valores Mobiliários, the "CMVM") has received a passporting notification under Directive 2009/65/EC of the European Parliament and of the Council and the Commission Regulation (EU) 584/2010 enabling the fund to be distributed to the public in Portugal. M&G Luxembourg S.A. is duly passported into Portugal to provide certain investment services in such jurisdiction on a cross-border basis and is registered for such purposes with the CMVM and is therefore authorised to conduct the marketing (comercialização) of funds in Portugal.

In Hong Kong, this financial promotion is issued by M&G Investments (Hong Kong) Limited, Office: Unit 1002, LHT Tower, 31 Queen's Road Central, Hong Kong; in Singapore, by M&G Investments (Singapore) Pte. Ltd. (Co. Reg. No. 201131425R), regulated by the Monetary Authority of Singapore; in Switzerland, by M&G International Investments Switzerland AG, Talstrasse 66, 8001 Zurich, authorised and regulated by the Swiss Federal Financial Market Supervisory Authority; elsewhere by M&G Luxembourg S.A. Registered Office: 16, boulevard Royal, L-2449, Luxembourg. For Hong Kong only: If you have any questions about this financial promotion please contact M&G Investments (Hong Kong) Limited. For Singapore only: All forms of investments carry risks. Such investments may not be suitable for everyone. The information contained herein is provided for information purposes only and does not constitute an offer of, or solicitation for, a purchase or sale of any investment product or class of investment products, and should not be relied upon as financial advice.

For Taiwan only: The information contained herein has not been reviewed or approved by the competent authorities and is not subject to any filing or reporting requirement. The information offered herein is only permitted to be provided to customers of an offshore banking unit of a bank ("OBU")/offshore securities unit of a securities firm ("OSU") which customers reside outside the R.O.C. Customers of an OBU/OSU are not eligible to use the financial consumer dispute resolution mechanism under the Financial Consumer Protection Law. Products offered by M&G Luxembourg S.A. may be made available for purchase by Taiwan OBUs/OSUs acting on behalf of non-Taiwan customers of such units but may not otherwise be offered or sold in Taiwan.

FEB 23/ 909403 PAN\_EUR\_SG\_HK\_TWN